

 4  3  3

O
|
H



Clewer Hill Road, *Windsor*

OSBORNE HEATH

A detached bungalow with four bedrooms, three reception rooms and driveway parking on the outskirts of Windsor.

This detached bungalow has three double bedrooms, one with an en suite, a further single bedroom/study, kitchen/dining room, living room, conservatory, a family bathroom and a shower room.

Outside there is a driveway for multiple cars with side access to a private rear garden with patio and lawn.

The property is situated on the outskirts of Windsor, approximately 1.5 miles away from the town centre. Windsor has a wide range of shops and restaurants as well as the Castle, Great Park, Racecourse and Legoland. Nearby train stations include Windsor & Eton Central and Windsor & Eton Riverside where trains run to London Paddington (via Slough) and London Waterloo. Local schools include Braywood, The Kings House, Oakfield, The Queen Anne, St Edwards, Trevelyan, Trinity St Stephen, Upton House, Eton, Windsor Boys and Windsor Girls. Windsor is also convenient for the M4, M25 and Heathrow Airport.

EPC D. Council Tax Band F. Deposit £3,000. Holding deposit £576. Lease Length 12-36 months.

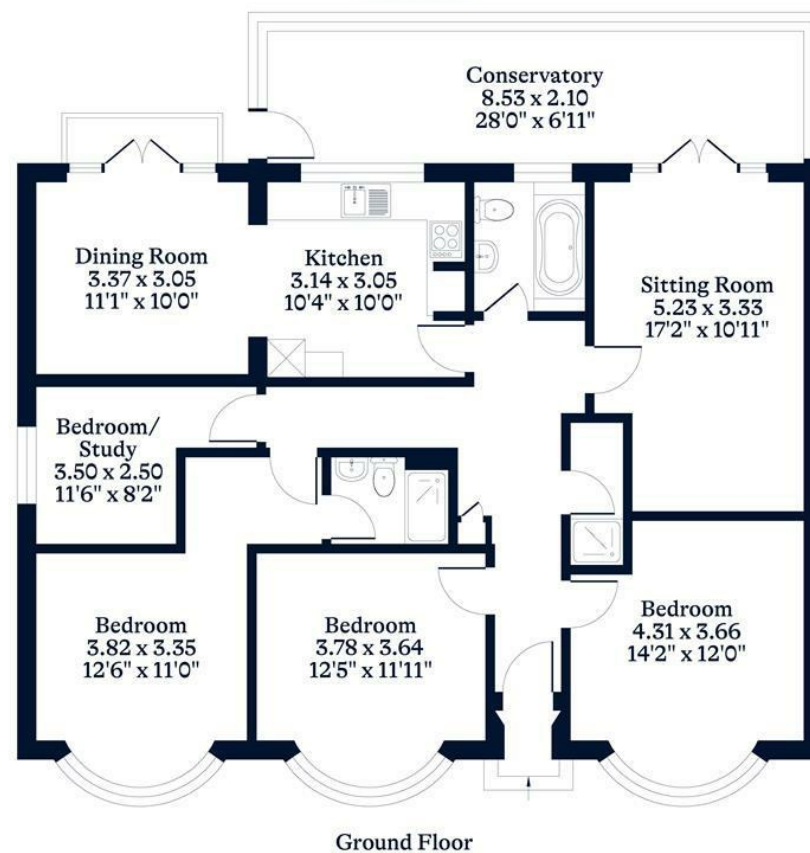




APPROXIMATE FLOOR AREA
House - 134.00 sq m - 1442 sq ft
(Gross Internal Area)



NOT TO SCALE
This plan is for illustration purposes only



This plan is for layout guidance only. Not drawn to scale unless stated. Windows and door openings are approximate. Whilst every care is taken in the preparation of this plan, please check all dimensions, shapes and compass bearings before making any decisions reliant upon them.

OSBORNEHEATH.CO.UK